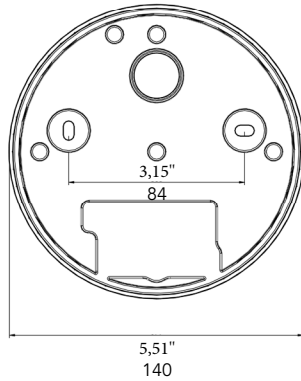
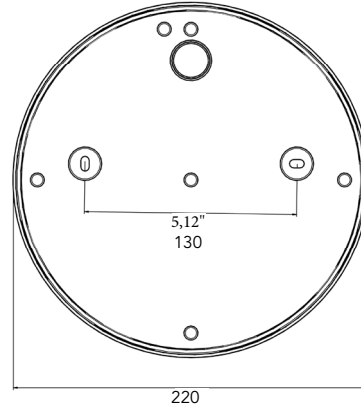


VERSO FLAT

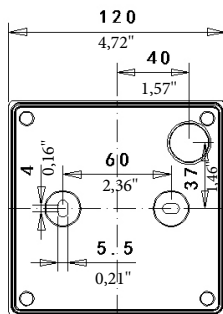
Verso Flat RD



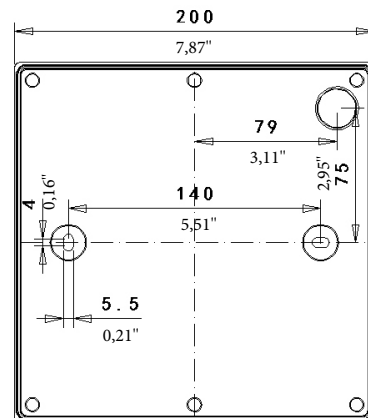
MaxiVerso Flat RD



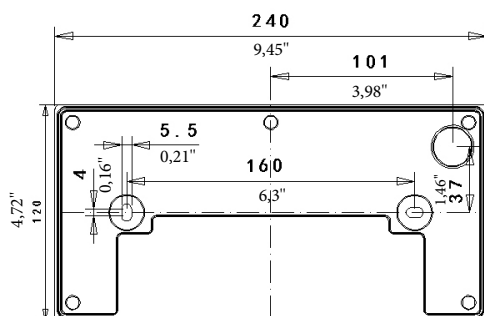
Verso Flat SQ



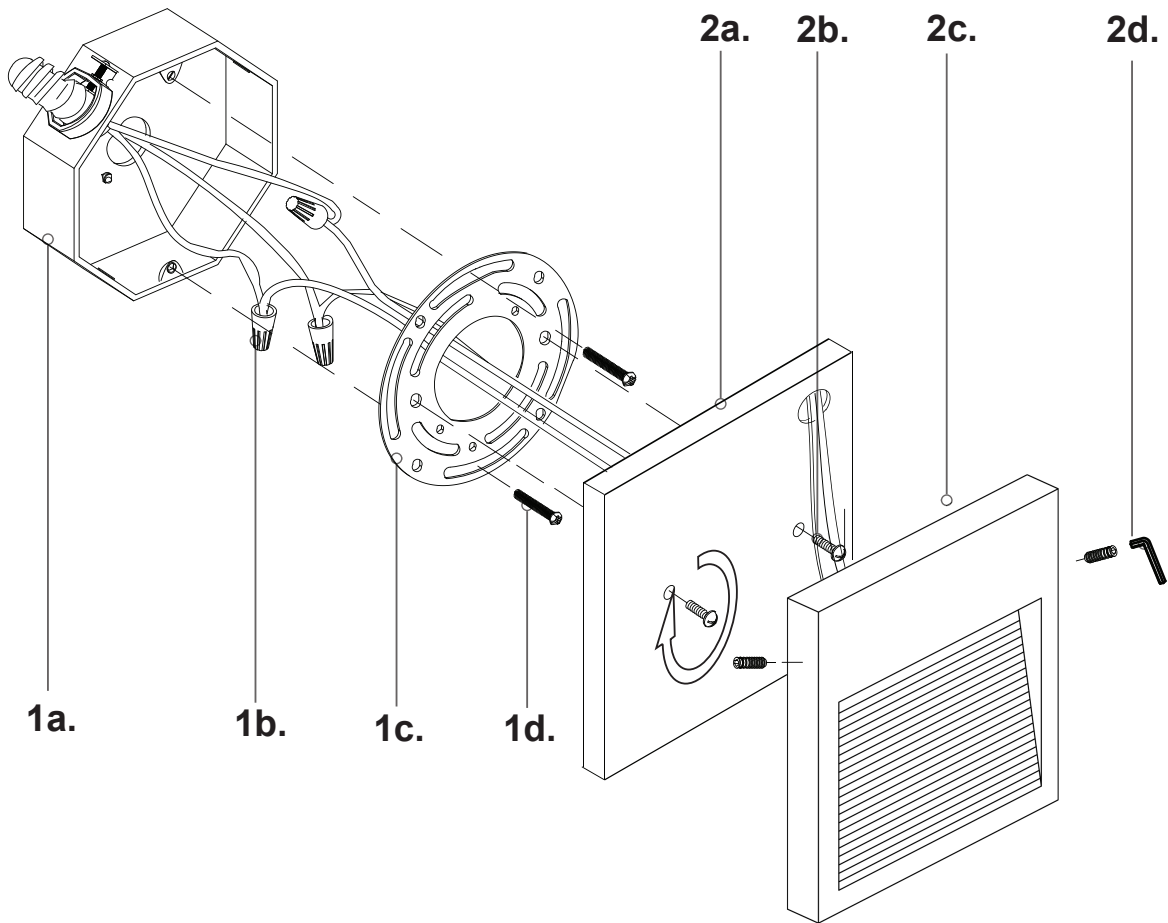
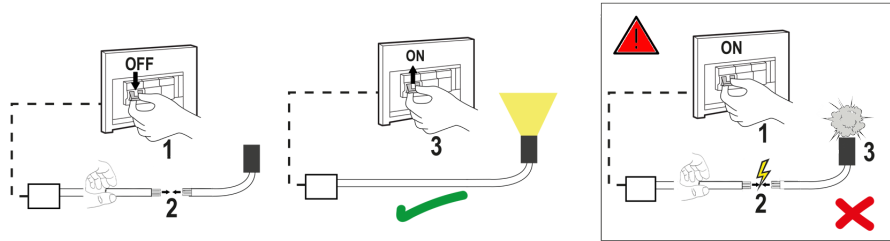
MaxiVerso Flat SQ



LongVerso Flat SQ



Switch-off the power supply



- 1.** Attach the canopy backplate (**2a**) to the mounting plate (**1c**), which is attached to the electrical junction box (**1a**) on the wall. First attach all wiring with the marrettes (**1b**) (white to white "N", black to black "L", ground to ground "G"). Now direct the canopy backplate (**2a**) onto the mounting plate (**1c**) be sure to line up the mounting threaded holes with the screws (**2b**). Next, place the canopy (**2c**) onto the canopy backplate (**2a**) and secure with all four set screws (**2d**) turning clockwise.
- 2.** Remove the fixture from its original packaging. Remove the mounting plate (**1c**) from within the canopy backplate (**2a**) by loosening the set screws (**2d**) and screws (**2b**). Secure the mounting plate (**1c**) to the junction box (**1a**) with screws (**1d**).
- 3.** *FOR OUTDOOR OPTION ONLY*
To prevent moisture from entering the outlet box and causing a short, seal around the top and side perimeter between the fixture and the wall surface with weather resistant caulking (see Outdoor Option). The space at bottom should be left un-caulked to prevent moisture build-up.
- 4.** Installation of your fixture is completed.

(EN) WARNING:

- The safety of this fixture is guaranteed only if you comply with these instructions; remember to keep in a safe place.
- The appliance must not be tampered with or transformed and it must be installed and used as supplied and in compliance with the national rules on installations.
- Switch-off the power supply before carrying out any maintenance operations. hot plug-in is not allowed and may cause damage to the luminaire.
- The light source contained in this luminaire shall be replaced only by the manufacturer or his service agent.
- Installation and service must be performed by qualified service personnel.
- Use the unit only complete with diffuser.
- Any non-compliant installations will invalidate all forms of guarantee.